



OUR LADY HELP OF CHRISTIANS Catholic Primary School

“Under Your Protection “



8 Cambridge Street, Epping, 2121

Ph: 9868 3322 Fax: 9868 5035

Email: olhc@dbb.catholic.edu.au

After School Care: 9869 3635

www.dbb.org.au/schools/olhcpepping

No. 1 3rd February 2010 (Week 1 Term 1)

WEEKEND MASSES

Saturday 9.15am

Saturday Vigil: 6.00 pm

Sunday 8.00 am, 10.00 am & 6.00 pm

Weekday Masses OLHC Church

Thursday 7.00 am (Convent)

Tuesday & Friday 12.15 pm

Wednesday 9.15am

From the Principal

A warm welcome back to all families of Our Lady Help of Christians Catholic School for 2010. We look forward to working in partnership for the good of the school community.

New Families

A special welcome to the following new families: Wu, Prowse, Dunn, Power, Abbott, Hartmann, Low, Armstrong, Meares, Poulter and Sridhar. We welcome these families, new staff and children to the OLHC parish community. We are a parish school fulfilling a special ministry in education on behalf of the Catholic Church. We are sure that you will find our OLHC community to be very supportive, welcoming and enthusiastic.

2010 Kindergarten

A huge congratulations to the Kindergarten children and their families for the way that they have settled into the school. The exciting journey for the 19 new Kindergarten children has begun at Our Lady Help of



Christians Catholic Primary School. All the children of Kindergarten should be commended on the way that they have settled into life at “big school”. This time of transition can be difficult but with the support of many people the children are finding this experience a positive one.



2010 Staff

Two new members of staff have joined us this year: Mrs. Mina Bridgefoot (Year 4 Teacher) and Mrs. Brigid Readford (Learning Support Teacher). We wish them every success and thank them for undertaking these roles at our school. The staff for 2010 is as follows:



Kindergarten	Mrs. Dalle-Nogare
Year 1	Mrs. Lah
Year 2	Miss McDonald (4days) and Miss Madigan (1 day)
Year 3	Miss Ireson
Year 4	Mrs. Bridgefoot
Year 5/6	Mrs. Dawson (4 days) and Mrs. McVicar (1 day)
Music / Drama	Mrs. Mead
Library	Mrs. Jackson
PE	Miss. Hayes
Learning Support	Mrs. Readford
Teacher's Aide	Mrs. Turner

My School Website

A large focus over the last couple of weeks has been on the information contained in the ‘My School’ website. As a school community we should all be very pleased with the information stated on the website about OLHC. However, it is important to remember that the NAPLAN results are only one assessment indicator and that teachers are assessing the needs of the children each and every day.

More importantly, academic achievements are one component in the education of the **whole child**. As a Catholic school I believe we have strengths around pastoral care, spreading the gospel values, building community, the partnership between home and school, acceptance of difference, recognition of gifts and talents – just to name a

few. These and many other factors are what schools should be judged on.

Please take the time to read the response to the 'My Schools' website by Br. Tony Whelan, Director of Schools Broken Bay which is attached to this newsletter.

Parents and Friends Welcome BBQ

An important event in the school calendar is the Parents and Friends Welcome BBQ which is on this Friday beginning at 6:00 pm. An invitation was sent to all families last Friday and so I encouraged as many families to attend as possible.



If it is raining on Friday a decision will be made at around 2:00 pm. on the day and a note will be sent home with the children informing parents if the event will go ahead.

Uniform Shop

Jane Morrison has accepted the position as P&F President for 2010 (to my knowledge the first woman to do so. Girl Power!). As a result the position of Uniform Shop Coordinator is available. If any parents are willing to take on this role please contact the School Office. (This could be a shared position.)



Class Mothers

Many thanks to those mums who have volunteered to take on the role of class mums. These mums are currently formulating lists to be distributed to each family. If you do not wish to have your details made public please alert the School Office.

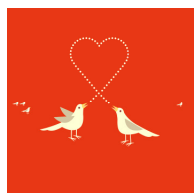
Epping Twilight Markets

A reminder that the next Epping Twilight Market is on Friday 12th February. Any assistance at this market would be greatly appreciated.



Parent Education: 123 MAGIC

A flyer is attached to the newsletter advertising a parent workshop: 123 Magic. This invitation is open to any parent so please spread the word to neighbours, aunts, uncles as this is a very worthwhile program.



Congratulations

Our congratulations and best wishes go to Louise McDonald and Reinier Jongejan on announcing their engagement.

We wish them every happiness!

Concluding Prayer

At Home in School

May everyone feel at home in this school:
at home in the classroom,
at home in the buildings,
at home in the playground,
at home with one another.

Kevin Turner
Principal

Diary Dates

Term 1 2010

Week 2

5th Feb Opening School Mass 12.15pm
Welcome BBQ 6pm

Week 3

10th Feb OLHC Swimming Carnival
Epping Twilight Markets

Week 4

17th Feb Ash Wednesday Mass 12.15pm

New School Email Address

There is a new email address for the school:

olhc@dbb.catholic.edu.au

From the Office

2010 School Fees

The 2010 school fee invoice will be sent home within the next week.

The payments are due in three instalments. The amounts and dates for each instalment are shown on this invoice. Please keep this invoice for reference during the year.

After the end of each month you will be sent a statement which shows any payments which have been made during that month.

If you have any queries about your invoice, please contact Leanne Speechley in the office.

From the AP

Welcome to the 2010 school year, I hope that your family had a marvellous break together and that the children have returned to school with great gusto for the year ahead.

An especially warm welcome to the staff and families who have joined our community this year. Thank you for sharing part of your journey with us. I trust that you will be very happy here as we work in partnership to develop your child's passion for learning!

I cannot believe that we are into February already. This year is going to fly, just as last year did!

Today you will be inundated with notes to read. I would encourage you to sit down with a lovely hot cuppa and go through these one at a time. I know that this is much easier said than done!

As you know, your child's safety is very important to us and communication between school and home is vital.

Just a few reminders about some of the notes that have come home to you:

Afternoon Routines

Please read this carefully as this procedure is imperative for the safety of all children. We have a great system of an afternoon that works really well if everyone follows the routine- including the people who park in the local area.

We can make as many signs as your family requires. Please return the cut off sheet and the signs will come to you as soon as possible.

All of the children who are being picked up from school must wait at Car Pool.

Asthma and Allergies Notification

Notes regarding Asthma and Allergies have come home with your child today. Please assist us in completing these forms promptly so that we have relevant and up to date information to keep your child safe at school. Thank you for your cooperation with this matter.

Bike Permission Forms

These forms, along with the policy guidelines are available at the school office. A new permission form needs to be completed every year. Thank you for your assistance with this matter.

Email of the newsletter

A convenient service that we offer here at Our Lady Help of Christians is to email the school newsletter to families. Please return these details as soon as possible so that the list can be compiled and you can start reading at your leisure!

The newsletter is also available from the school website at www.dbb.org.au/schools/olhcepping in the news and events section. I would encourage you to regularly check the school web site for up to date news and information. As the year progresses we plan to make a lot of use of the website.

Photos/local excursions

Please ensure that you complete this form and return it to your child's teacher by Monday, 8th February, prior to the Primary Swimming Carnival. We do our very best to keep these records up to date and we appreciate your assistance.

Sports Uniform

Your child will need to wear school uniform on the following days:

Year 1	Wednesday and Thursday
Kindy Year 2-6	Thursday and Friday

Please ensure that your child is in full uniform and remind them that it is important to wear their uniform with pride at all times.

Signing In and Out at Our Lady Help of Christians

All adults who come into our school grounds must sign in and out at the School Office. This is a very important safety procedure to keep everyone safe. We are a welcoming community who greatly appreciate and value the contribution that parents make to our community and to the children's learning. We want to ensure the safety of everyone and be able to monitor the people who are on our property.

This means that all helpers around our school during school hours will need to come via the school office to visit Leanne and Leigh and sign before proceeding to the classroom. This would include situations such as:

- dropping something in for your child
- tuckshop helper
- helping in the classroom
- assisting in the Library

On your way out you will need to visit Leanne and Leigh again and sign out.

Again, this is for safety and is not to be a deterrent to parents. You are always most welcome at Our Lady Help of Christians Primary School. Thank you for your support and understanding with this matter. Leanne and Leigh look forward to you popping in!

The future belongs to those who believe in the beauty of their dreams.

Eleanor Roosevelt

Second thoughts...

@You might need a second cuppa!

Feel free to come and see me if you need a chocolate as a reward for going through all of that! 😊

Peace,
Louise McDonald
Assistant Principal

Enrolment for First Reconciliation

The enrolment period for the preparation program for First Reconciliation commences on Sunday 31st January and fully completed enrolment forms must be received at either parish office by Sunday 14th February. Enrolment forms are available near the rear entrances to both our churches and from the parish website www.eppcarl.org.au. Carefully read and retain the information sheet which accompanies the enrolment form and note all the relevant dates for the program in your diary. Lesson days and time for celebration of the sacrament on March 20th are allocated as the forms are received. So if you want your first preference, please lodge the form early in the enrolment period.

Children aged 7 and older may enrol in the sacramental program. The decision of when to commence is at the discretion of parents who know their child best. A letter giving information and dates for all the sacramental programs this year is available from both our churches and the parish website. This includes the celebration of First Reconciliation, Confirmation, First Holy Communion and the preparation for Baptism of children aged 7 and over.

Please contact me with any questions regarding the sacramental preparation programs.

Julie Astalosh
Sacramental Program Coordinator
Catholic Parish of Epping & Carlingford
0407 255 593 or julie@epccarl.org.au

Epping Twilight Markets

The following families are rostered on to assist with the smooth running of the next Twilight Markets on Friday 12th February 2010:



3.30 to 6.30pm: Morrison (Operations Manager), Ré, Sharpe, Millen, Bronk, Boyce, Exton, Khachiki, Baldwin, Gray, Osman.

6.30 to 8.45pm: Snell, Demasi, Book, Wright, Aston, Kewin, Chanekon, Gregorio.

8.45 to 9.30pm (Pack up crew): Fernandopulle, Aloisio, Sheehan, Glennie, O'Callaghan, Fitzgerald.

On the night, can all volunteers sign in on the form that is located at the first aid desk.

Tiffany Chanekon

Epping Twilight Markets Book Stall

After the success of the second hand book stall at the December Twilight Markets, we are going to run a stall again at the upcoming February 12th markets.

Of course the only reason our first book stall was a success was the generous high quality book donations made by the OLHC community.

Once again I am appealing for donations of books to sell at the markets.

If you didn't get the opportunity to clear out your bookshelves at the end of last year, now is your chance. Maybe you were given a book for Christmas and have already finished it. Instead of letting it languish on the bookshelf, why not donate it to your child's education.

I will leave a tub for donated books in the OLHC office.

Every book counts. Thank you.

Scott Kay
0413274873



Canteen

The canteen will be open for business this Friday 5th February. Morning tea will be served over the counter and lunch, as usual, is to be ordered via a brown bag. The 2010 price list will go home next week, so please use the existing price list for this week.

Canteen Coordinators

Uniform Shop

Uniform Shop will be open this Friday 5th February from 8.30 – 9.30am.

Orders can also be sent through the black bag at other times and will be returned to your children.

Please note the supplier of the hats has changed and they will now be of a higher quality and more durable. As such, hats will cost \$15 for girls and \$12 for boys as old stocks run out.

Girl's sizes small and medium and boy's medium will be new stock only from now on. There is also a slight delay in supply while we await the first shipment.

Please contact me with any queries.



Jane Morrison 9868 4541

Soccer News

Unfortunately it will not be possible to field soccer teams from OLHC in the GHFA this year. If you played with OLHC in prior years and would like to stay with your teams then please contact your coach or manager from 2009. Our friends at North Epping would be happy to work something out but this will need some coordination with your team leadership. Alternatively, please consider registering with the Rangers as they have an excellent club. If you would like to register with the Rangers, there is on-line registration (see new user) at

<http://members.ner.org.au/html/default.cfm>
(You can indicate when registering that you played with OLHC in 2009.)

There are information days at the Rangers clubhouse at North Epping Oval on Saturday 6th February -Soccer Only (10am -2pm). If you have any questions then please contact Michael Stern (Junior Soccer, 0414 557 277) or Helen Armson (Mini Soccer 0431 108 059)

I would like to take this opportunity to thank all the volunteers who helped with running the soccer teams and committees in previous years.

Peter Gray 0412 338 491

OLHC Epping Netball Club

Registration 2010

Netball Registration is fast approaching, and Registration Forms will be emailed to all those who expressed interest in playing for OLHC during 2010.

If you didn't get around to replying last year, and your daughter would like to play, please contact **Julie on 0402 454 983** and I will be happy to email you Registration Forms.

We would love to get 3 teams playing for OLHC this year, so any additions are warmly welcome (even those that do not attend OLHC).

(Nb: The Registration Morning scheduled for this Saturday, will no longer be required, as all Registration Information will be sent via email).



Julie Da Rin